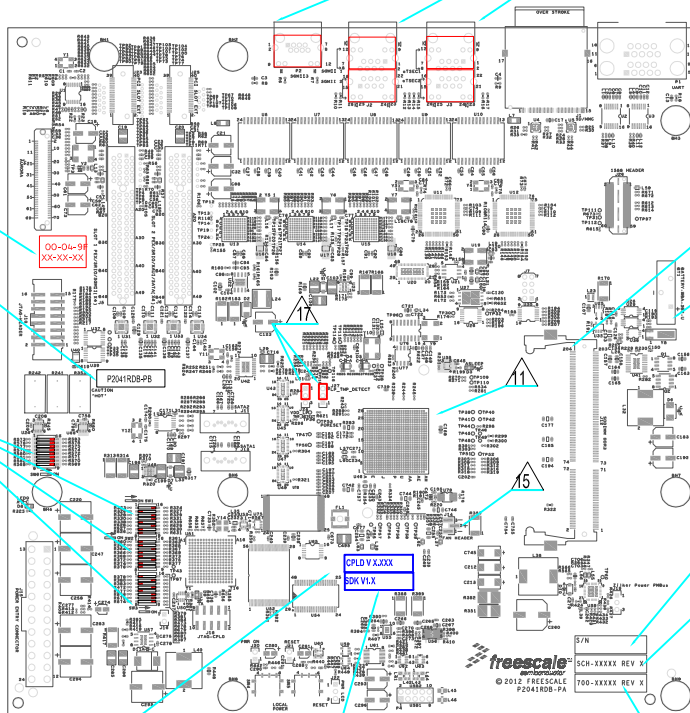


NOTES : TRIANGLE SYMBOLS IDENTIFY NOTES ON THIS DRAWING.

↑
LABEL TEXT
ORIENTATION



PRIMARY SIDE

SOLDER PROCESS	
Pb FREE	YES <input checked="" type="checkbox"/> NO <input type="checkbox"/>

900-26914	P2041RDB-PB
NEXT ASSY	USED ON
APPLICATION	

UNLESS OTHERWISE SPECIFIED DIMENSIONS ARE IN INCHES.
TOLERANCES ARE:
DECIMALS
XX ± .020
XXX ± .010
✓ RMS ALL MACHINED SURFACES
BREAK ALL SHARP EDGES AND CORNERS.
REMOVE BURRS.
UNDERLINED DIM NOT TO SCALE.
THIRD ANGLE ORTHOGRAPHIC PROJECTION IS USED.

MATERIAL

FINISH

HEAT TREAT

PART NO. 700-27492

THIS DOCUMENT CONTAINS INFORMATION PROPRIETARY TO FREESCALE AND SHALL NOT BE USED FOR ENGINEERING DESIGN, PROCUREMENT OR MANUFACTURE IN WHOLE OR IN PART WITHOUT THE CONSENT OF FREESCALE.

____ PWB PUBLIC INFORMATION
____ PWB FREESCALE INTERNAL USE ONLY
____ PWB FREESCALE CONFIDENTIAL PROPRIETARY

APPROVALS		DATE
DRAWN	BRIAN	11/19/12
CHECKED	BOBBY	11/19/12
DESIGN ENGINEER	PAUL GAN	11/19/12



freescalse semiconductor
501 WILLIAM CANNON DRIVE
AUSTIN, TEXAS 78735-8556 USA

TITLE
PWB ASSEMBLY
P2041RDB-PA/PB

SIZE	FILE NAME	DWG. NO.	REV
B	ASY-26914.DXF	ASY-26914	G
SCALE	NA	DO NOT SCALE DRAWING	SHEET 1 OF 2

NOTES:

- ALL COMPONENTS MUST BE ABLE TO WITHSTAND THE PB-FREEASSBMBL PROFILES DESCRIBED IN IPC/JEDEC J-STD-020C (LATEST VERSION).
- WORKMANSHIP SHALL CONFORM TO IPC-A-610 (LATEST REVISION) -CLASS 2 STANDARD.
- PART SUBSTITUTION CRITERIA :-
ALL COMPONENT SUBSTITUTIONS MUST BE APPROVED AND DOCUMENTED BY FREESCALE.
- MAXIMUM LEAD PROTRUSION ON PRIMARY AND SECONDARY SIDE OF PRINTED WIRING BOARD IS .100".
- PLACE ASSEMBLY/REVISION LABEL (805-75115) WITH PRINTED "700-27492 REV_" WHERE SHOWN.PRINTED ON THIS LABEL MUST BE THE AGILE REVISION OF THE PWA
- PLACE SCHEMATIC/REVISION LABEL (805-75918) WITH PRINTED " SCH-26914 REV_" WHERE SHOWN.PRINTED ON THIS LABEL MUST BE THE AGILE REVISION OF THE SCHMATIC.
- PLACE PRINTED SERIAL NUMBER LABEL (805-75116) WHERE SHOWN.
- INSERT THE BATTERY(670-00012) INTO THE SOCKET OF BT1. PLEASE MAKE SURE THE ANODE SIZE FACES OUTSIDE.
- INSTALL MEMORY MODULE (336-76520) INTO J12, ENSURE IT IS FULLY INSERTED AND FITTED
- PLACE 6 PCS MAC ADDRESS LABELS (805-77101) ON THE AREA 10 WHERE SHOWN. YOU CAN GET THE MAC ADDRESS FROM FSW-26914
- PEEL OFF THE PROTECTIVE FILM OF FAN (260-75146) AND INSTALL IT ON THE TOP OF U45 .NEED PRESSING THE HEATSINK TO ENSURE GOOD CONTACT WITH U4 6
- PLACE MARKETING PART NUMBER LABEL (805-76760) WITH PRINTED "P2041RDB-PB"
- PLACE BOOT CODE VERSION LABEL (805-76760) WITH PRINTED " SDK V1.x" PLEASE FOLLOW FSW-26914 DEFINED
- PLACE CPLD VERSION LABEL (805-76760) WITH PRINTED "CPLD V X.X" PLEASE FOLLOW FSW-26914 DEFINED
- INSERT THE FAN POWER HEADER INTO THE J14.
- SETTING THESE SWITCH AS TABLE 1.
- INSTALL 2 PCS SHUNTS (210-11263-00) ON J24 (1-2), J27 (2-3).

TABLE 1.

	1	2	3	4	5	6	7	8
SW1	ON	OFF	ON	ON	OFF	ON	OFF	OFF
SW2	OFF	OFF	ON	OFF	OFF	ON	OFF	OFF
SW3	OFF	ON	OFF	ON	OFF	ON	ON	ON
SW6	ON	ON	ON	ON	ON	ON	ON	ON

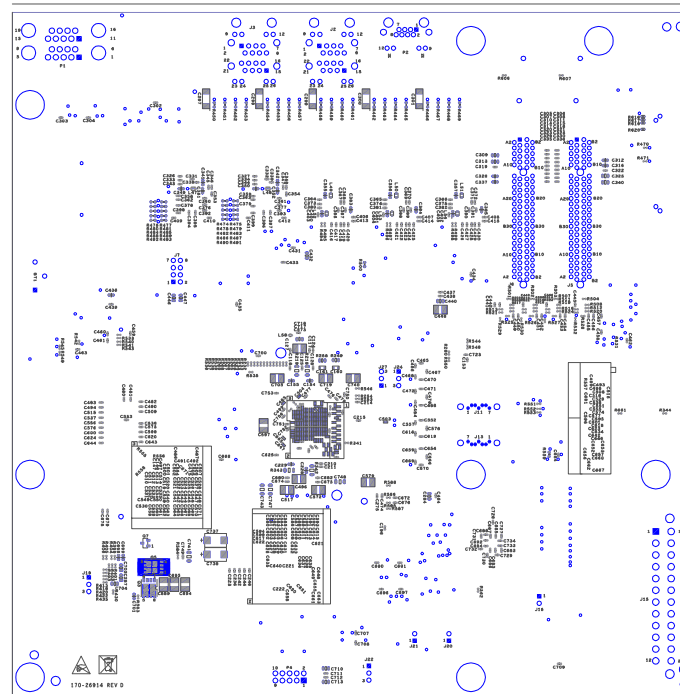
4

3

2

1

NOTES : TRIANGLE SYMBOLS IDENTIFY NOTES ON THIS DRAWING.



SECONDARY SIDE



PUBI (PUBLIC INFORMATION) X_FIID (FREESCALE INTERNAL USE ONLY) FCP (FREESCALE CONFIDENTIAL PROPRIETARY)			
TITLE PWB ASSEMBLY P2041RDB-PA/PB			
SIZE B	FILE NAME ASY-26914.DXF	DWG. NO. ASY-26914	REV F
SCALE	NA	DO NOT SCALE DRAWING	SHEET 2 OF 2